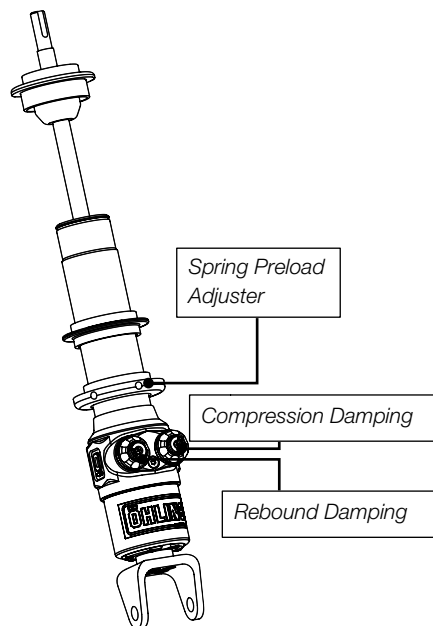


# Adjustments

## ⚠ Warning!

Before driving the vehicle, read and make sure you understand how the product works. Read more about adjustments and setting up in the Öhlins Owner's Manual before you make any adjustments. Contact an Öhlins dealer if you have any questions about setting up the shock absorber.



# Set-up Data

	Street	Track
Compression damping	10 clicks	7 clicks
Rebound damping	16 clicks	16 clicks

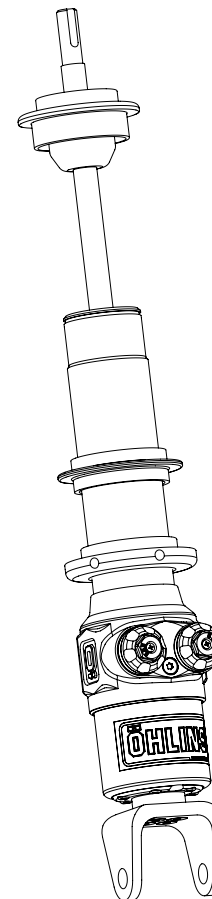
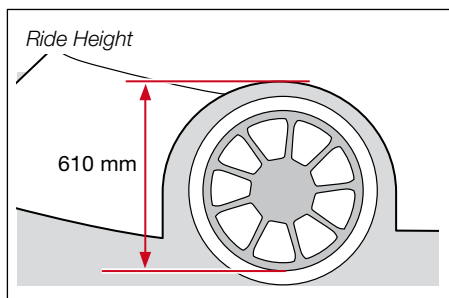
## Provided Springs

### Main Spring

Spring Rate	230 N/mm
Free length	190 mm (5")
ID	57 mm (2.25")

### Helper Spring

ID	57 mm (2.25")
----	---------------



Before installing this product, check the contents of the kit. If anything is missing, please contact an Öhlins dealer.

## Kit Contents

	Part No.	Pcs.
Shock abs. left/right rear	POF 6J01	1
Sticker	00192-01	1
Spring	01096-93	1
Helper spring	05173-07	1
Spring support	05281-06	1
Spring retainer	25038-01	1
Heat shrinkable end cap	25042-01	1
Owner's manual	07446-01	1

## 👁 Note!

Please note that during storage and transportation, especially at high ambient temperature, some of the oil and grease used for assembling may leak and stain the packaging. This is in no way detrimental to the product, wipe off the excess oil/grease with a cloth.

## ⚠ Warning!

Before installing this product, read the Öhlins Owner's Manual. The shock absorber is an important part of your vehicle and will affect the stability.

👁 Öhlins products are subject to continuous improvement and development, therefore, although these instructions include the most up-to-date information available at the time of printing, minor updates may occur.

To find the latest information contact your Öhlins distributor. Please consult your Öhlins dealer if you have any questions regarding the contents in this document.

Part no. POF6J01\_0  
Issued 2010-06-08



# Shock Absorber for Porsche 997 GT3 RS - rear

# POF6J01

## Mounting Instructions

© Öhlins Racing AB. All rights reserved. Any reprinting or unauthorized use without the written permission of Öhlins Racing AB is prohibited.

Öhlins Racing AB  
Box 722  
S-194 27 Upplands Väsby, Sweden  
Phone +46 8 590 025 00  
fax +46 8 590 025 80



[www.ohlins.com](http://www.ohlins.com)



**⚠ Warning!**

It is advisable to have an Öhlins dealer install the shock absorber.

⚠ When installing, read the Vehicle Service Manual.

⚠ When working on a raised vehicle, ensure the vehicle is securely supported so that it will not tip.

**1**  
Remove the wheel.

**👁 Note!**  
Be sure to note the position of the bearing spacers for the anti-roll bar link.

**2**  
Remove the anti-roll bar.

**3**  
Disconnect the PASM wire to the shock absorber. The wire is located at the lower end of the original shock absorber.

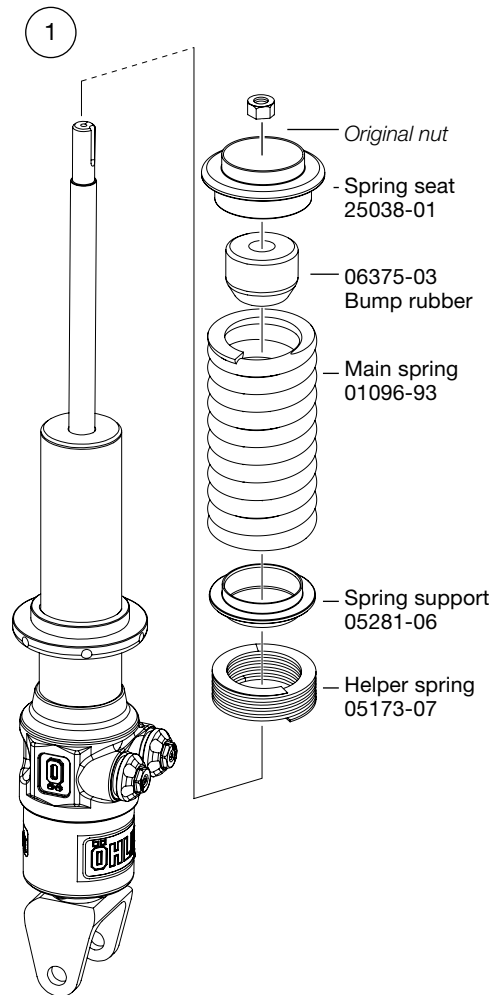
**4**  
Remove the three upper attachment nuts of the original shock absorber.

**5**  
Remove the toe-in stay.

**6**  
Remove the lower bolt of the original shock absorber. Remove the shock absorber.

**7**  
Install the springs and provided parts on the shock absorber according to figure 1.

**8**  
Install the Öhlins shock absorber with the bracket pointing down and adjusters towards the wheel well. Tighten the upper attachment nut first.



**9**  
Insert the lower attachment bolt through the suspension arm and the shock absorber.

**10**  
Reattach the anti-roll bar link.

**👁 Note!**  
Be sure to reinstall the bearing spacers for the anti-roll bar link in the proper position (see step 2).

**11**  
Tighten the lower attachment nut.

**12**  
Reinstall the wheel.

**13**  
Carefully shrink the heat shrinkable end cap over the PASM connector to save it from dirt.

**👁 Note!**  
Since the original shock absorber and electric wire is disconnected there will be a error indication on the dashboard "PASM failure". Please contact a Porsche dealer to have the message turned off.

**14**  
After installing all shock absorbers (front and rear), check the vehicle ride height. If necessary, adjust (See section Spring Preload in the Öhlins Owner's Manual. Read the vehicle service manual for recommended ride height.

**👁 Caution!**  
Make sure that all bolts are tightened to the correct torque and that there are no binds and that nothing restricts movement of the shock absorber when the suspension is being fully compressed or extended.