

Kit Contents		
Description	Part No	Pcs
Steering damper, stroke 63	02262-10	1
Frame bracket assembly	02232-04	1
Shims	01430-14	10
Bracket assembly SD	02230-11	1
Sleeve (6/14/15)	02239-01	1
Teflon spacer	02259-01	1
Screw (MC6S 6 x 100)	01046-47	1
Triple clamp bracket	02270-39	1
Sleeve (8/13.5/12.5)	02238-06	1
Screw (M6SF 8 x 45)	00432-05	1
Screw (K6S 8 x 20)	05404-02	1
Washer	00426-04	1
Öhlins sticker	10207-01	1
Öhlins Owner's manual	07261-02	1

👁 Note!

Please note that there can be small differences between your product and the images in these instructions.

👁 Note!

Please note that during storage and transport, especially at high ambient temperature, some of the oil and grease used for assembly may leak and stain the packaging. This will not cause damage to the product, wipe off the excessive oil or grease with a cloth.

👁 Note!

Before you install this product, check the kit contents. If anything is missing, please contact an Öhlins dealer.

⚠ Warning!

Before you install this product, read the Öhlins Owner's manual. This product is an important part of the vehicle and the vehicle stability.

Steering damper for Yamaha R6

SD 055

Mounting Instructions



MOUNTING INSTRUCTIONS

⚠ Warning!

We strongly recommend to let an Öhlins dealer install this product.

⚠ Warning!

If you work with a lifted vehicle, make sure that it is safely supported to prevent it from tipping over.

👁 Note!

When you work with this product, see the vehicle service manual for vehicle specific procedures and important data.

👁 Note!

Before you install this product clean the vehicle.

1

Remove the front fuel tank attachment screw.

2

Remove the steering stem nut.

3

Attach the frame bracket assembly (02232-04) and tighten the new steering stem nut. Use the original washers for the steering stem and fuel tank attachment.

👁 Note!

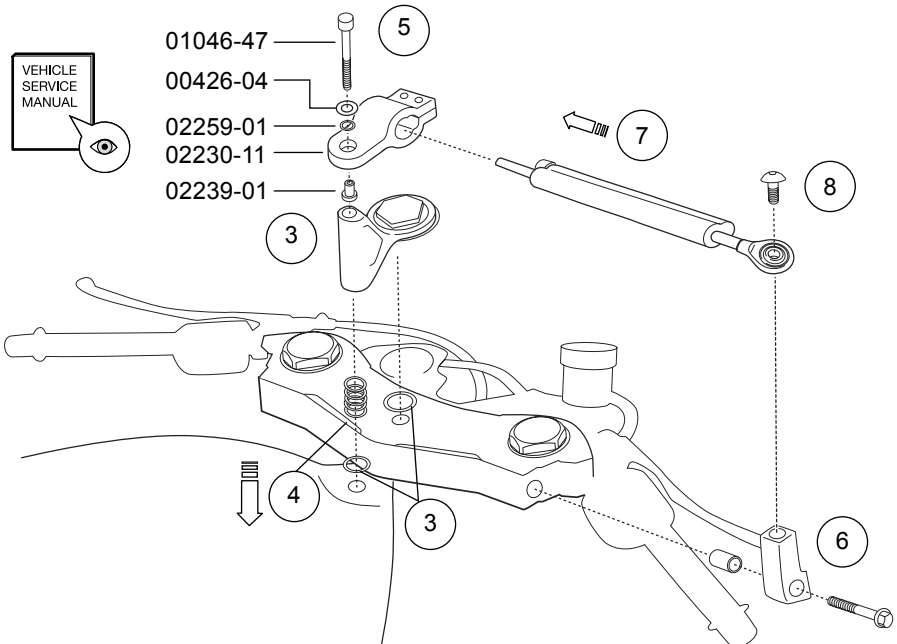
Tighten the top nut of the steering stem to the torque recommended in the motorcycle workshop manual. If no recommended torque is written, tighten to 100 Nm.

4

Press down the fuel tank attachment, and at the same time fill up the gap completely with shims (01430-14). Use as many shims as needed to **prevent freeplay between the frame bracket assembly and the fuel tank attachment.**

5

Attach the bracket assembly (02230-11) by using sleeve (02239-01), teflon spacer (02259-01), washer (00426-04) and screw (01046-47).



MOUNTING INSTRUCTIONS

6

Attach the triple clamp bracket to the right side of the triple clamp. Use the sleeve (02238-06) and the screw (00432-05).

7

Attach the Öhlins steering damper to the bracket assembly. Do not tighten yet.

8

Attach the steering damper end eye to the triple clamp bracket. Use the screw (05404-02) provided in this kit.

9

Adjust the steering damper by letting it slide in its bracket assembly so that the steering damper uses similar stroke both ways.

Note!

Make sure that the steering has clearance for turning both to the left and to the right end positions, and that the damper is not used as a stop.

10

Tighten the bolts to the correct torque.

Screw M5	6 Nm
Screw M6	10 Nm
Screw M8	24 Nm

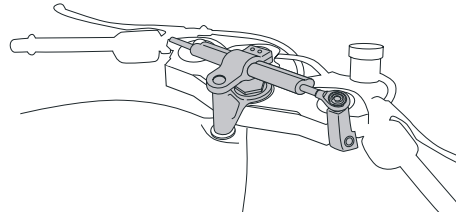
11

Set the damper to the recommended set-up in this folder.

Caution!

Make sure that all screws are tightened to the correct torque and that nothing fouls or restricts movement of the steering damper.

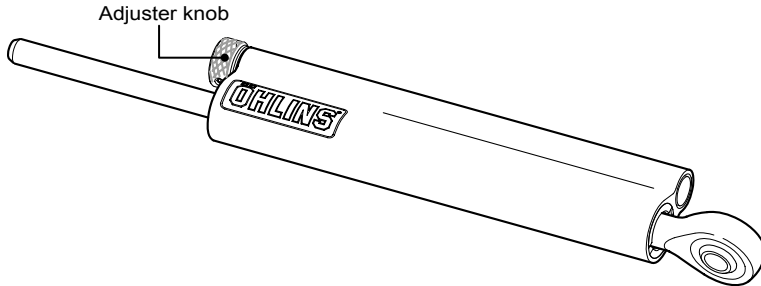
Öhlins steering damper installed



ADJUSTMENTS

⚠ Warning!

Before you ride/drive, always make sure that the setup is according to the recommended setup data. Read about adjustments and setting up in the Öhlins Owner's Manual before you make any adjustments. Contact an Öhlins dealer if you have any questions about setting up.



SETUP DATA

Recommended set-up 10 clicks

Öhlins products are subject to continuous improvement and development, therefore, although these instructions include the most up-to-date information available at the time of printing, minor updates may occur.

To find the latest information contact an Öhlins distributor. Please contact Öhlins if you have any questions regarding the contents in this document.

Part no. MI_SD055_0
Issued 2018-02-23

© Öhlins Racing AB. All rights reserved. Any reprinting or unauthorized use without the written permission of Öhlins Racing AB is prohibited.

Öhlins Racing AB
Box 722
S-194 27 Upplands Väsby, Sweden
Phone +46 8 590 025 00
fax +46 8 590 025 80



www.ohlins.com